

# CONNECTOR MANUFACTURERS

**TOPTek®**  
HARDWARE ELECTRONIC MANUFACTURER

www.toptek-co.com

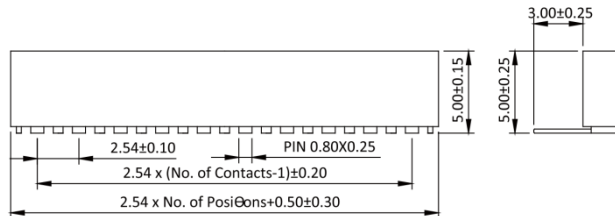
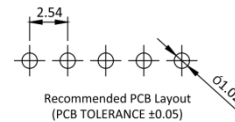
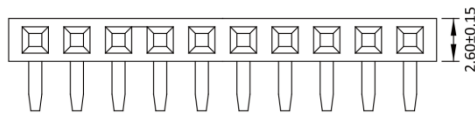
## Female Header 2.54mm 1 Row H=5.0mm Right Angle Type

### Specifications

Current Rate: 3 AMP  
 Insulation Resistance: 1000MΩ Min.  
 Contact Resistance: 20mΩ Max.  
 Dielectric Voltage: 1000V AC for one minute  
 Operation Temperature: -40°C to +105°C

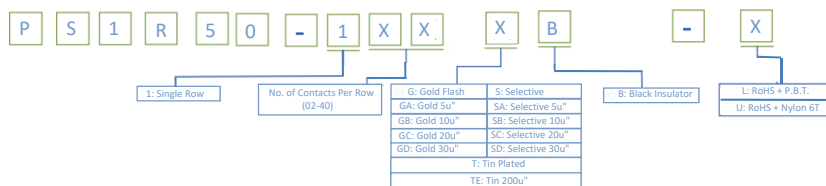
### Material

Insulator: Hi-Temp. Thermoplastic, UL 94V-0  
 Terminal: Copper Alloy  
 Plating: Gold Plated



Part No.: PS1R50-1XX-X

## ORDER INFORMATION



©: Standard Recommend

